

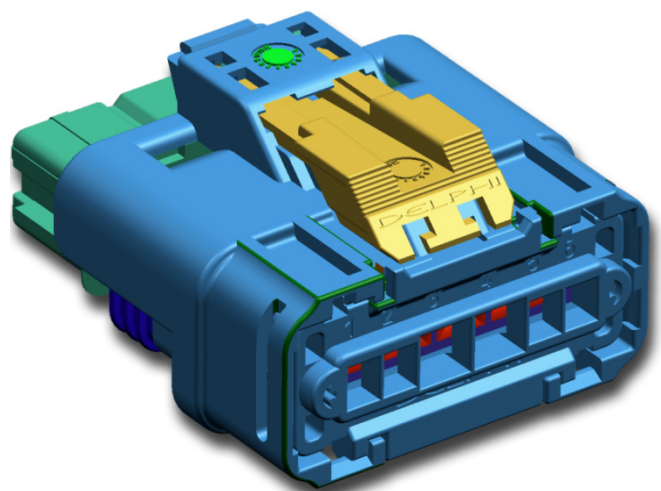
# DELPHI

## Assembly Manuals

### Connector 6-way for 150/280 Terminals (BTS and similar)

sealed

Vehicle assembly



D

REV 03 - May 2012  
ADI15458155-3

## TABLE OF CONTENTS

	Page
<a href="#">Components (exploded view)</a> .....	3
<a href="#">List of components</a> .....	4
<a href="#">View of versions</a> .....	5
<b><a href="#">ASSEMBLY SEQUENCE:</a></b> .....	<b>7</b>
<a href="#">step 1: connecting <i>Male and Female</i></a> .....	7
<a href="#">step 2: locking <i>CPA</i></a> .....	8
<b><a href="#">DISASSEMBLY SEQUENCE:</a></b> .....	<b>9</b>
<a href="#">step D-1: unlocking <i>CPA</i></a> .....	10
<a href="#">step D-2: disconnecting <i>Male and Female</i></a> .....	11
<a href="#">Revisions</a> .....	12

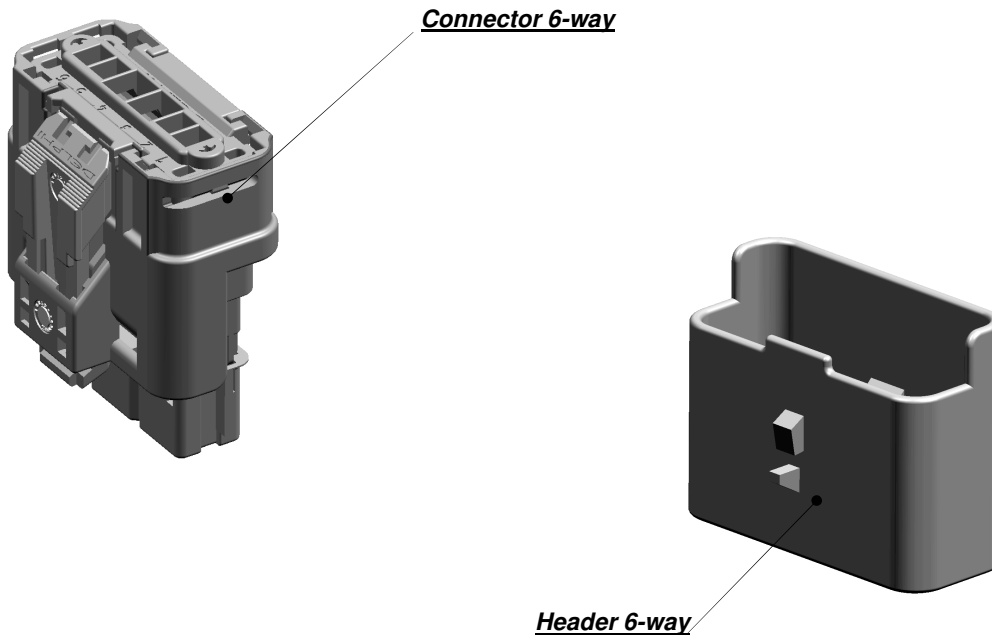
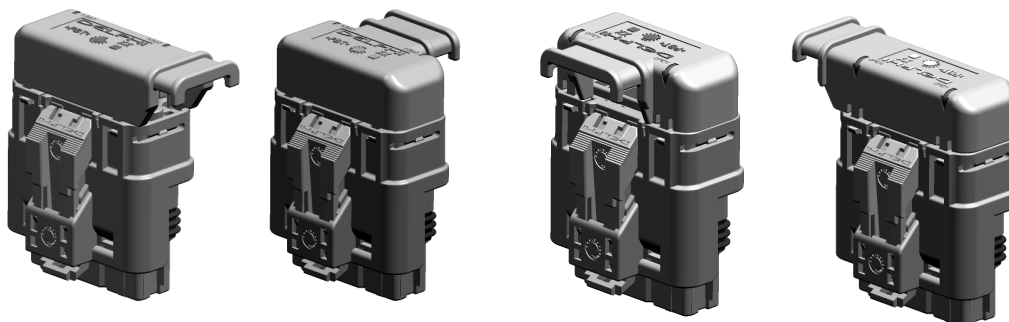
---

The information contained in these assembly instructions is subject to alteration without prior notice and does not represent any obligation on the part of DELPHI. All information is correct at the time of releasing. Reprinting or translation is not permitted without written permission from DELPHI. © Copyright 2012 DELPHI. All rights reserved.

---

## EXPLODED VIEW

**ATTENTION.**  
**Optional Cable Caps are not available**



**Connector 6-way**

**Header 6-way**

Pictures used in this Assembly Manual and original parts may differ in some details,  
This difference has no influence on the assembly process .

## LIST OF COMPONENTS

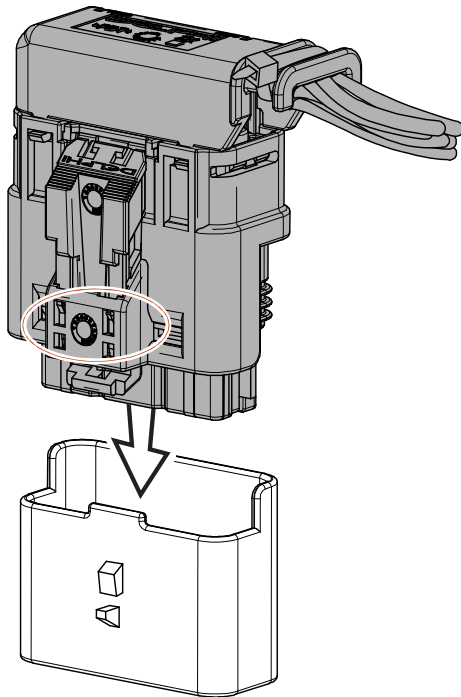
Component (assembled)	Delphi PART-NO.
<b>Receptacle Housing 6-way</b> pre-assembled	15440053 - 55 (1,5 line without CPA) 15458160-62 (1,5 line with CPA) 15458151-53 (mixed without CPA) 15458163-65 (mixed with CPA) 15427148 (2 cavities closed without CPA) 15458159 (2 cavities closed with CPA)

STORAGE CONDITIONS BEFORE ASSEMBLY	
TEMPERATURE:	+18°C to +55°C
RELATIVE HUMIDITY:	45% to 85%
ATMOSPHERIC PRESSURE:	860 hPa to 1060 hPa
STORAGE TIME:	min. 24 hours

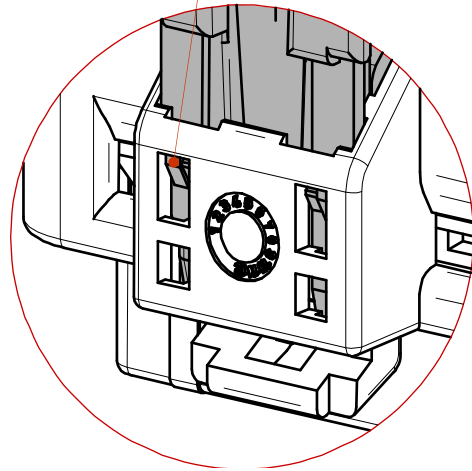


## CONNECTING CONNECTORS

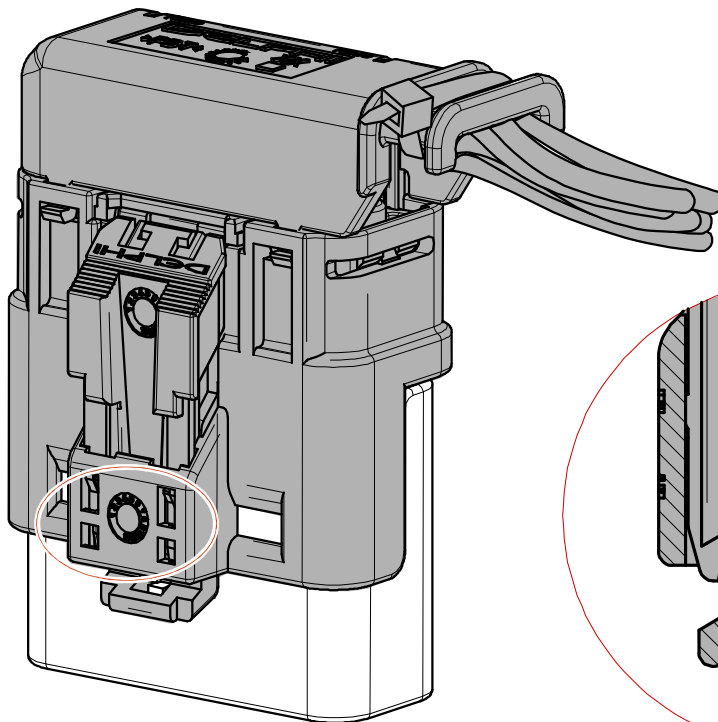
VEHICLE  
ASSEMBLY



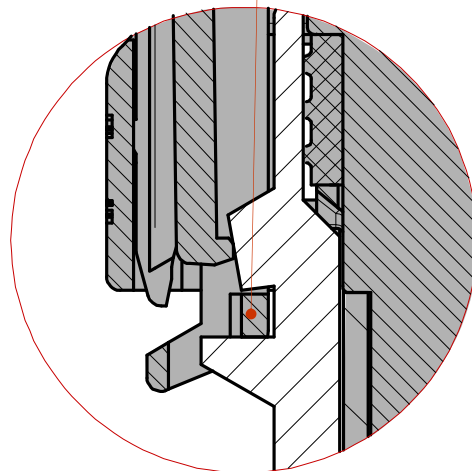
**! Check whether the CPA  
remains in preliminary  
position!  
(Connector 6-way only)**



1 Connect *Male* and *Female* Connectors until its locking arm is locked.



**correctly locked  
Female Connector  
locking arm**



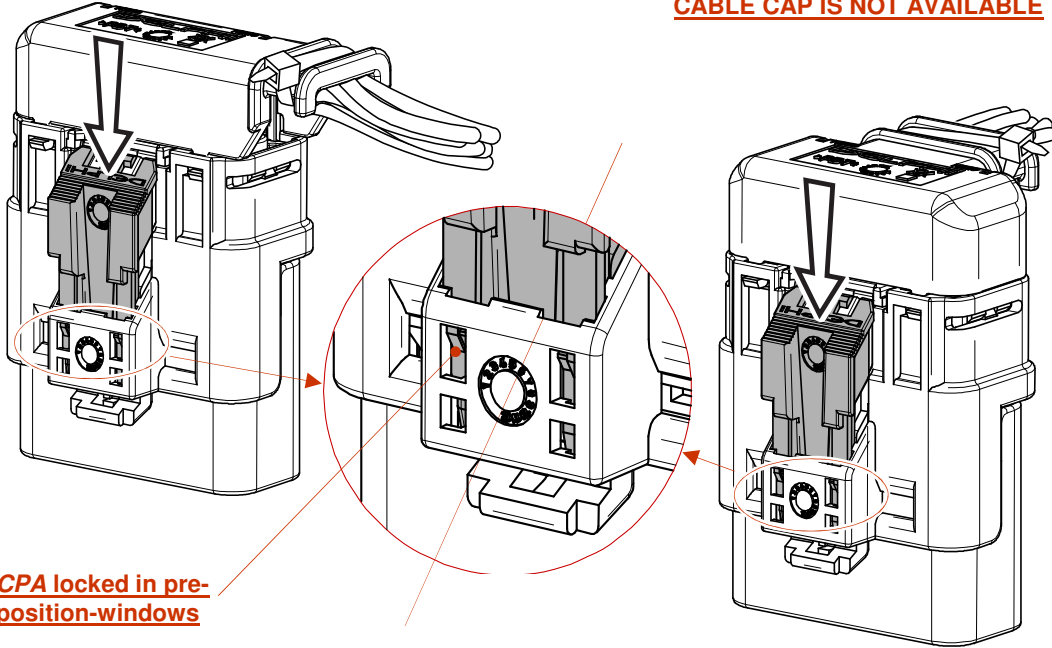
Step completed.

## LOCKING CPA

**OPTIONAL ! – CPA is on option**

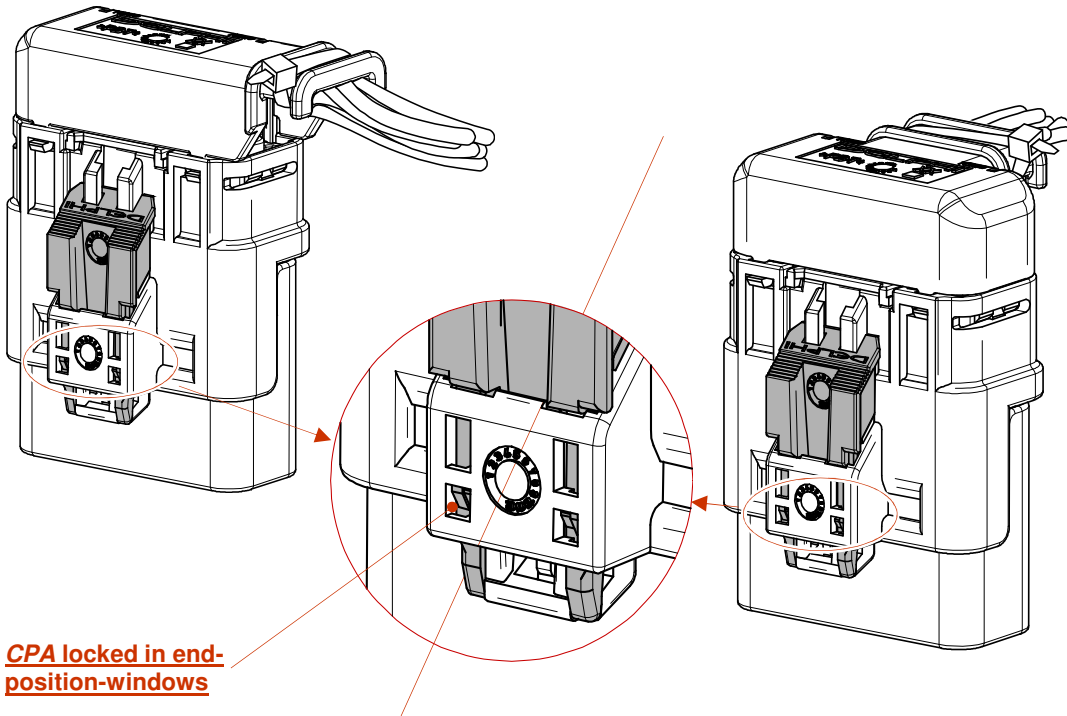
**OPTIONAL (Cable Cap TYPE A and B)**

**ATTENTION !  
CABLE CAP IS NOT AVAILABLE**



Push CPA until it is locked in end-position-windows.

2



Step completed.

**Disassembly**



**Sequence**

**THE END OF ASSEMBLY / CONNECTING SEQUENCE**

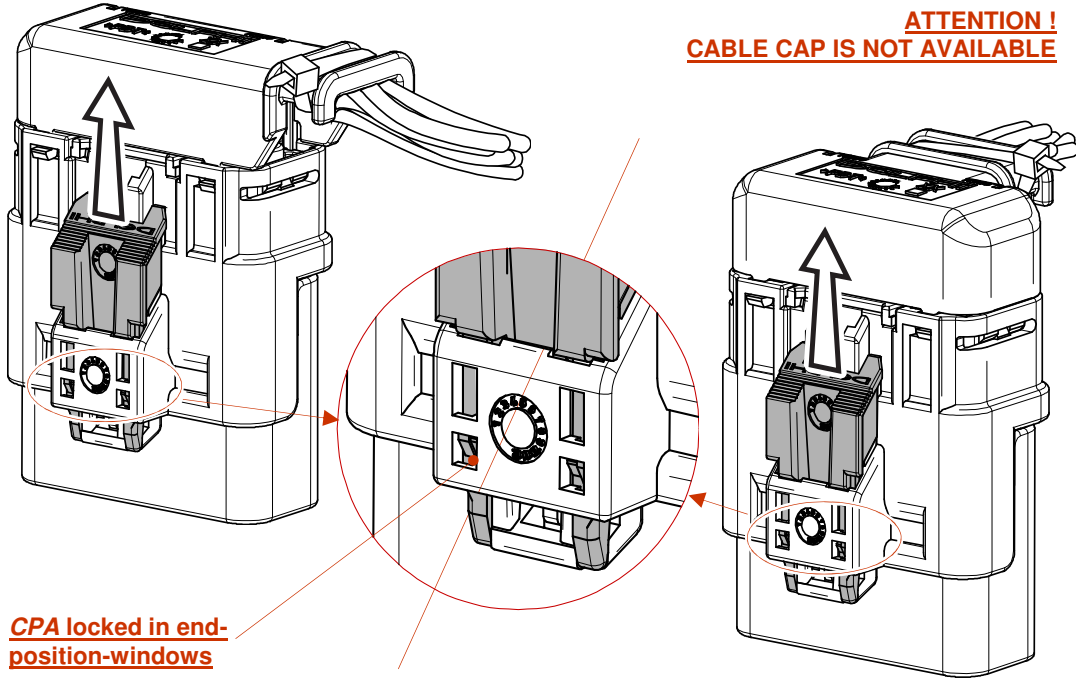


## UNLOCKING CPA

**OPTIONAL ! – CPA is on option**

**OPTIONAL (Cable Cap TYPE A and B)**

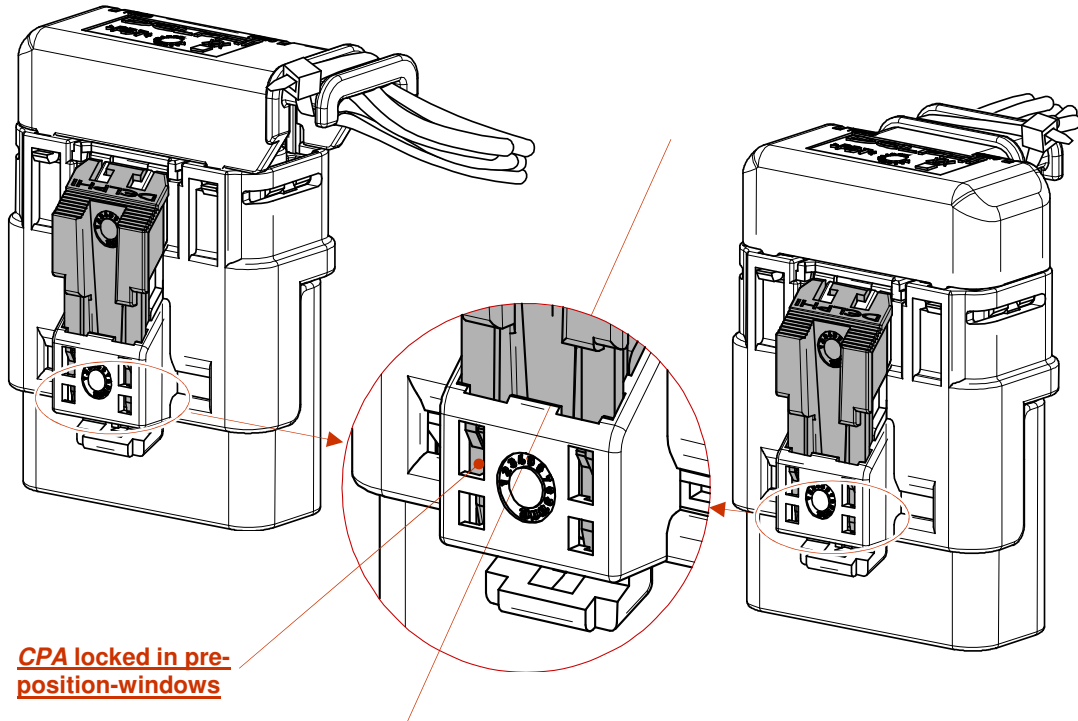
**ATTENTION !  
CABLE CAP IS NOT AVAILABLE**



**CPA locked in end-position-windows**

**Pull CPA until it is locked in pre-position-windows.**

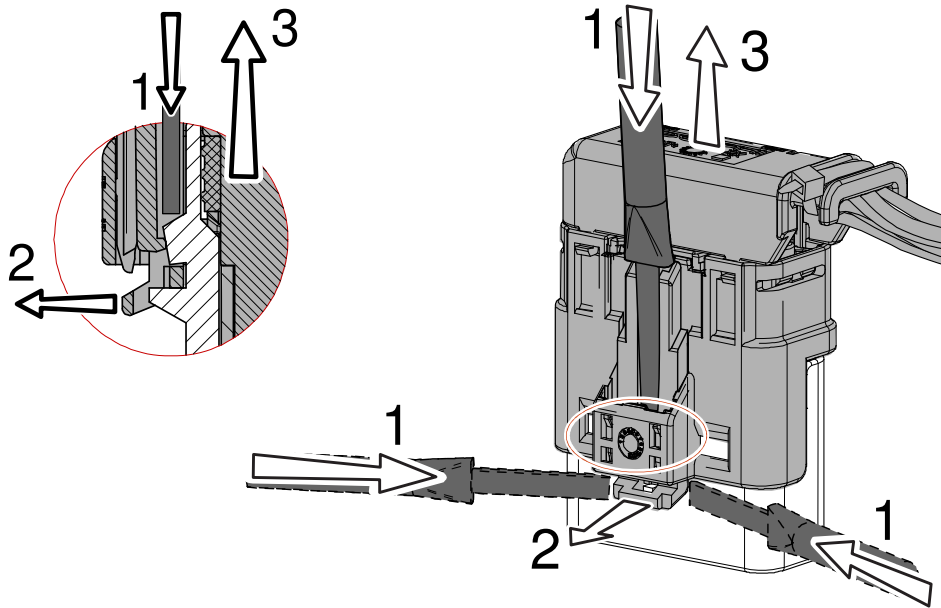
**D-1**



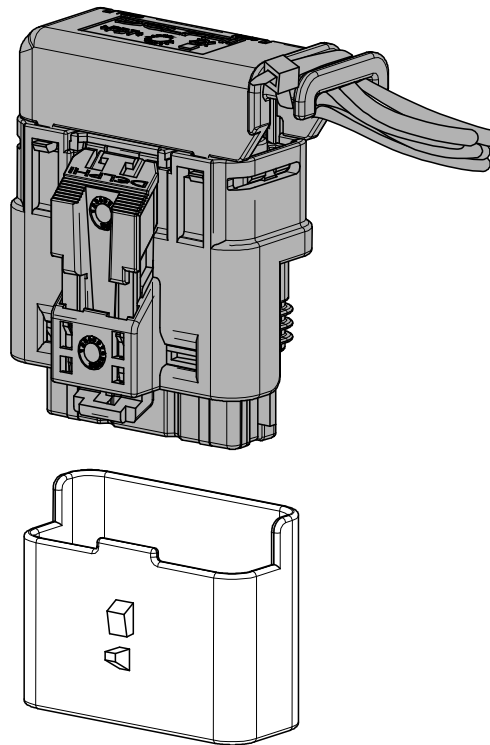
**CPA locked in pre-position-windows**

**Step D-1 completed.**

## DISCONNECTING CONNECTORS



**Step D-2:** Insert screw driver (from right side or left side or from the top - arrow 1), unlock locking arm (arrow 2) and disconnect (arrow 3) *Male and Female Connectors*.



**Step D-2 completed.**

## REVISIONS

Revision	Change description	Date
REV 01	Initial release	Mar 24, 2005
REV 02	Step D2 changed	Jul 10, 2008
REV 03	Connectors 2-, and 3-way deleted	May 1, 2012